

Why MPS?

Which systems are we interested in?
spin systems, (i.e. spin chains, spin ladders and ...)

why?
Spin systems are one of the candidates for quantum information processing devices (state transfer, ...)

What do we want to know?
- Construction of the ground state.
- Studying the properties of this state (Correlation functions, Correlation length, Entanglement).
- Quantum phase transitions and ...

How can we gain these?
One of the best candidate is *Matrix product states (MPS)*

Problem: Constructing the ground state is so hard to do (if possible at all).
Solution: MPS gives us a recipe for constructing the ground state and many other interesting properties of desired system.

How does MPS work?

System: An array of N , d -level objects (Fig. 1)
Boundary condition: Periodic

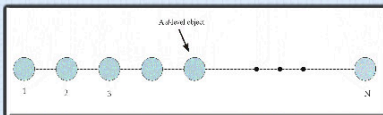


Fig. 1) A chain of N , d -level spins with periodic boundary condition

Ground State:

$$|\Psi\rangle = \sum_{i_1, i_2, \dots, i_N} \psi_{i_1 i_2 \dots i_N} |i_1, i_2, \dots, i_N\rangle$$

Matrix product coefficients (symmetries of the system are reflected in A 's):

$$\psi_{i_1, i_2, \dots, i_N} = \frac{1}{\sqrt{Z}} \text{tr}(A_{i_1} A_{i_2} \dots A_{i_N})$$

Transfer matrix and normalization constant:

$$E = \sum_{i,j} A_i^* \otimes A_j \quad Z = \text{tr}(E^N)$$

Average value of an observable:

$$\langle \Psi | O(k) | \Psi \rangle = \frac{\text{tr}(E^{k-1} E_O E^N E^k)}{\text{tr}(E^N)} \quad E_O := \sum_{i,j} (i|O|j) A_i^* \otimes A_j$$

and in thermodynamic limit:

$$\langle \Psi | O | \Psi \rangle = \frac{\langle \lambda_{\text{max}} | E_O | \lambda_{\text{max}} \rangle}{\lambda_{\text{max}}}$$

Two-point correlation functions:

$$\langle \Psi | O(k) O(l) | \Psi \rangle = \frac{\text{tr}(E_O(k) E_O(l) E^N)}{\text{tr}(E^N)} \quad E_O(k) := E^{k-1} E_O E^{-k}$$

In thermodynamic limit and large distances:

$$\langle \Psi | O(1) O(c) | \Psi \rangle - \langle \Psi | O | \Psi \rangle^2 = \frac{\lambda^{c-2}}{\lambda_{\text{max}}^2} \langle \lambda_{\text{max}} | E_O | \lambda \rangle \langle \lambda | E_O | \lambda_{\text{max}} \rangle$$

Correlation length:

$$\xi = -\frac{1}{\ln \frac{\lambda_2}{\lambda_1}}$$

Symmetries

- Our system is symmetric under this transformation

$$R|i\rangle = R_{ij} |j\rangle$$

that is $\Psi_{i_1, i_2, \dots, i_N} \rightarrow \Psi' := \text{tr}(A'_{i_1} A'_{i_2} \dots A'_{i_N})$

they are applied to A 's in this way

$$\langle T_{ij} \rangle A_j = [T_{ij}, A_i] \quad R_{ij} A_j = U(R) A_i U^{-1}(R)$$

Hamiltonian of the system:

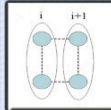


Fig. 7) Local hamiltonian h is written for two successive rungs. The total hamiltonian is the sum of local ones.

$$\begin{aligned} |\psi_{2,m}\rangle &= \lambda_2 \left(|2^{(200)}, m\rangle - |2^{(002)}, m\rangle \right) \\ |\psi_{1,m}\rangle &= \lambda_1^{(1)} |1^{(202)}, m\rangle + \lambda_1^{(2)} |1^{(001)}, m\rangle + f(u, v, \lambda_1^{(1)}) |1^{(000)}, m\rangle + \\ &\quad \lambda_1^{(3)} |1^{(000)}, m\rangle + g(u, v, \lambda_1^{(1)}) |1^{(002)}, m\rangle + g(u, v, \lambda_1^{(1)}) |1^{(200)}, m\rangle \\ |\psi_{0,0}\rangle &= \lambda_0 \left(|0^{(000)}, 0\rangle + h(u, v) |0^{(000)}, 0\rangle \right) \\ h_{i,i+1} &= \sum_{j=0}^2 \sum_m |\psi_{j,m}\rangle \langle \psi_{j,m}| \\ H &= \sum_i h_{i,i+1} \end{aligned}$$

Outlook

- Calculating concurrence of the system in terms of u and v .
- Studying behavior of the entanglement in terms of parameters of the system.
- Obtaining the hamiltonian in terms of spin operators to understand the interactions of the system.
- Studying the first excited state.
- Studying non-homogeneous spin systems.
- Studying problems with open boundary condition.

References:

- [1] A. Klumper, A. Schadschneider and J. Zittartz, J. Phys. A (1991) L293; Z. Phys. B. 87 (1992) 281; Europhys. Lett., 24 (1993) 293.
- [2] M. Fannes, B. Nachtergaele and R. F. Werner, Commun. Math. Phys. 144, 443 (1992).
- [3] D. Perez-Garcia, F. Verstraete, M. M. Wolf and J. I. Cirac; quant-ph/0608197v1.
- [4] M. Asoudeh, V. Karimipour, and A. Sadrolashrafi; Phys. Rev. B 75, 224427 (2007).
- [5] Michael M. Wolf, Gerardo Ortiz, F. Verstraete and J. Ignacio Cirac; cond-mat/0512180 v1.

Our Problem

Spin-1 Ladder (Fig. 2) with full rotational symmetry:

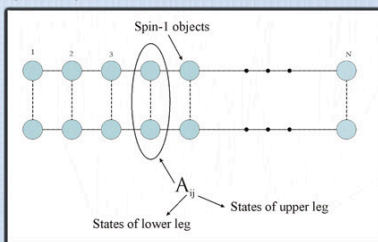


Fig. 2) Spin-1 Ladder. To each possible state of a rung a matrix is associated.

Two point correlation function between first and r th site, for S in the x, y or z direction:

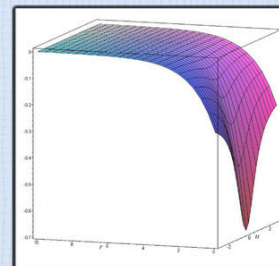


Fig. 6) Two point correlation function of S versus u and r for $v=1.5$.

Two point correlation function between first and r th site, for s in the x, y or z direction:

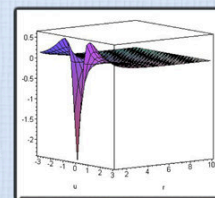


Fig. 6) Two point correlation function of s versus u and r for $v=1$.

Average value of S^2 in x, y or z direction:

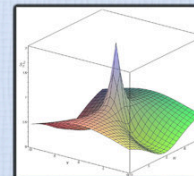


Fig. 5) Average value of S^2 versus u and v .

Inverse of correlation length:

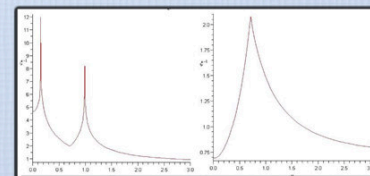


Fig. 4) Correlation length versus u for $v=0$ (left), $v=0.9$ (right).

Applying the full rotational symmetry to A 's causes all parameters to vanish except two: u, v .

Eigenvalues of transfer matrix (Fig. 3):

$$\lambda_1 = \frac{5}{3} + v^2 + 2u^2 \quad \lambda_2 = v^2 + u^2 - \frac{5}{6} \quad \lambda_3 = v^2 - u^2 + \frac{1}{6}$$

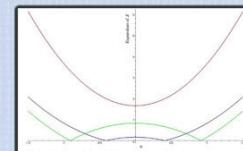


Fig. 3) Eigenvalues of transfer matrix, E versus u for $v=0$.

Results

The authors would like to thank all the members of Quantum Information group at Sharif University of Technology esp. L. Memarzadeh, A. Sadrolashrafi, S. Raeesi for instructive discussion.

Supported in part by Center of excellence in Complex Systems and Condensed Matter (CSCM).